

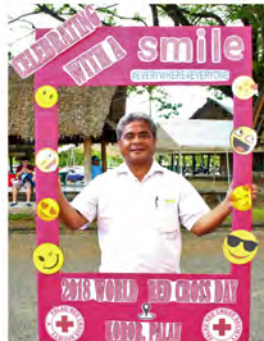


2018

# Annual Report







© PRCS Jan 2019, Koror, PW

*A Palau Red Cross a "Bedud er a Dmolech" el mo er a rokui el chad el kiei er Belau.*

# Table of Contents

|  |    |
|--|----|
| Message from the Chairman.....   | 4  |
| Message from the Executive Director.....   | 4  |
| Introduction and Acknowledgment .....  | 5  |
| Strategic Goal 1: Strengthen Palau Red Cross Society .....                                     | 5  |
| 1. Develop Branches. ....  | 5  |
| 2. Strengthen auxiliary role and partnerships. ....  | 6  |
| 3. Strengthen good governance.....   | 7  |
| 4. Improve transparency and accountability .....   | 7  |
| 5. Ensure financial sustainability .....   | 8  |
| 1. Capacitate human resources .....  | 10 |
| 2. Strengthen policies, systems and procedures .....   | 12 |
| 3. Improve external communications and PRCS positioning .....                                  | 12 |
| 4. Develop Logistics.....  | 17 |
| Strategic Goal 2: Enhance Community Resilience .....   | 17 |
| 1. Improve community disaster preparedness, disaster response and disaster risk reduction...17 |    |
| 2. Be the primary First Aid / CPR reference center in Palau .....                              | 21 |
| 3. Conduct community-based health activities .....   | 21 |
| 4. Promote voluntary non-remunerated blood donation .....                                      | 21 |
| 5. Promote social inclusion .....  | 22 |
| 2018 Challenges, 2019 Prospects .....  | 23 |
| Financial Statement [1 <sup>st</sup> October 2017 – 30 <sup>th</sup> September 2018] .....     | 24 |

## Note to the cover photo

This cover photo is both literal and symbolic. Palau Red Cross is literally renovating its storage containers to ensure that the Red Cross is ready and has the necessary supplies to respond to emergencies and disasters. It is also symbolic of the intensive efforts that the Palau Red Cross has exerted recently to revive the organization in making it a strong, relevant and sustainable humanitarian organization.







## Message from the Chairman



Palau Red Cross Society (PRCS) prides itself on the relationships and services that it has developed over twenty-one years in the Republic Palau. Despite the immense challenges that we faced in the past, PRCS has persevered to establish itself as the leading humanitarian organization in Palau and auxiliary to the Government.

In 2018 PRCS developed the five-year roadmap of long-term strategic goals and priorities to carry out the National Society's mission, to provide humanitarian services to alleviate sufferings especially for the most vulnerable among us.

We look forward to a future of continued growth, development, and success as PRCS continues to serve the people of the Republic of Palau.

Warmest Regards,

A handwritten signature in blue ink, appearing to read 'Santy Asanuma'.

Santy Asanuma  
Chairman, National Governing Board

## Message from the Executive Director



For FY 2018, the overarching goal for Palau Red Cross Society was to build capacity to ensure future growth targeting our core mission to promote safe, healthy and resilient Palauan communities. I am happy to report that we achieved this, PRCS did indeed undergo positive change and growth toward our mission.

Our team worked diligently all year long to improve policies, systems, and processes. Most importantly, we expanded the services and programs as well as extended our reach into the communities. Lastly, we stayed true to the 7 Fundamental Principles of the Red Cross Movement: Humanity, Impartiality, Neutrality, Independence, Voluntary Service, Unity and Universality.

I am thankful for the national governing board's unwavering support so that we were able to improve many aspects of the national society including communication, transparency and accountability to the membership of PRCS and the general community. I also thank the staff for their tireless efforts and dedication, and most especially our active youth members for their passion and energy.

Finally, a sincere thank you to all volunteers, members, donors, and community supporters. You are the pillars of PRCS and alongside with you, we will work together in 2019 to advance the mission of Palau Red Cross Society.

*"Imagine the possibilities with the Power of Humanity!"*

A handwritten signature in blue ink, appearing to read 'Joanne Maireng Sengebau'.

Joanne Maireng Sengebau  
Executive Director

## Introduction and Acknowledgment

This annual report 2018, and future annual reports of the Palau Red Cross Society (PRCS), shall be structured in such a way that it will reflect the National Society's journey through its Strategic Plan 2018-2022. It shall also be regularly published by the PRCS to inform the public, its members, volunteers, donors, and stakeholders about the accomplishments and challenges of their Red Cross in Palau.

These accomplishments of the PRCS could not have been done without the active volunteers, the national governing board members, and the staff who worked hard all year long. This first Annual Report is dedicated to former PRCS employees in FY 2018: **Catherine Littlefield, Kelsey Bohman, and Lisa Lyons Van Tassel**. These individuals were instrumental in laying the framework for PRCS' positive change and growth. **Kom kmal mlo mesaul.**

## Strategic Goal 1: Strengthen Palau Red Cross Society

### 1. Develop branches.

*Develop and implement a branch development program that establishes branches and branch leaders as per PRCS Constitution.*

- *Recruit and orient minimum number of branch members by 2018.*
- *Organize five constitutionally compliant branch assemblies.*

**PRCS Board Resolution #01\_Series 2017:** A Resolution setting the minimum number of members required to organize a Palau Red Cross Branch to deliver Red Cross services in the community was unanimously approved on 13 December 2017.

| ZONE                     | TOTAL POPULATION | MINIMUM REQUIRED ACTIVE MEMBERS |
|--------------------------|------------------|---------------------------------|
| DESBEDALL ZONE (EAST)    | 1,263            | 55                              |
| KIUKL ZONE (WEST)        | 3,976            | 173                             |
| ERNGUUL ZONE (KOROR)     | 11,444           | 498                             |
| ODESANGEL ZONE           | 484              | 21                              |
| (PELELIU)                | 184              | 8                               |
| NGEAUR ZONE (ANGAUR)     |                  |                                 |
| <b>TOTAL</b>             | <b>17,351*</b>   | <b>755</b>                      |
| *SOURCE: ROP 2015 CENSUS |                  |                                 |

| East Zone | West Zone    | Koror Zone     | Peleliu Zone | Angaur Zone |
|-----------|--------------|----------------|--------------|-------------|
| Ngaraard  | Kayangel     | Village/Hamlet | Peleliu      | Angaur      |
| Ngiwal    | Ngarchelong  |                |              | Hatothobei  |
| Melekeok  | Ngardmau     |                |              | Sonsorol    |
| Ngchesar  | Ngaremlengui |                |              |             |
|           | Ngatpang     |                |              |             |
|           | Aimeliik     |                |              |             |
|           | Airai        |                |              |             |

There were 153 members in October 2017. In one fiscal year, 464 additional members were recruited bringing the total number to **617 members** at the end of September 30, 2018. Membership recruitment is ongoing including preliminary planning for establishment of branches and branch leaderships.

## 2. Strengthen auxiliary role and partnerships.

- *Develop and implement Memorandum of Understandings with key stakeholders; e.g., Ministry of Health, Ministry of Education, Civil Society Organizations.*
- *Establish partnerships with key stakeholders.*

PRCS has been actively working to establish partnerships with key stakeholders within and outside Palau. Most if not all partnerships have continued from when they started to present time.

- **Office of the President, ROP, October 2017 - present**  
*Presidential Proclamation 17-219: To honor and congratulate the Palau Red Cross Society on its 20<sup>th</sup> Anniversary of service to the Republic of Palau and to recognize its valuable drives for support and contributions needed for people in distress from disasters and to call for continued donations and humanitarian support from the community.*
- **National Emergency Management Office (NEMO); National Weather Service; Ministry of Health, Emergency Health Program (EH); Early Warning Systems for Ngesang and Ulimang, Ngaraard, Sep 2017 – present**
- **National Emergency Committee (NEC); Oct 2017 – present**
- **US Army CAT 84-05; Oct 2017 – present**
- **US Air Force CAT 36-03; Nov 2018 - present**
- **Palau Community College; PRCS 20<sup>th</sup> Anniversary Fundraiser, Oct 2017**
- **Palau Wave Radio; Talk shows and Live Coverage, Oct 2017 – present**
- **Palau Royal Resort (PRR); Blood Donation Drive, November 2017 - present**
- **Workforce Innovation and Opportunity Act (WIOA); November 2017 - present**
- **Omekesang; International Day of Persons with Disabilities; Convention on the Rights of Persons with Disabilities Symposium, December 2017 - present**
- **Surangel and Sons; Holiday Canned Food Drive, December 2017**
- **WCTC Shopping Center and Airai Mart; Holiday Canned Food Drive, December 2017**
- **Ministry of Health, Home Health Program; Holiday Canned Food Drive, December 2017**
- **Ministry of Education; First-Aid and Basic Life Support Master Training, February 2018 and Water Safety Master Training, March 2018**
- **Ministry of Justice (MOJ); First-Aid and Basic Life Support Master Training, February 2018 and Water Safety Master Training, March 2018**
- **Palau National Olympics Committee (PNOC); First-Aid and Basic Life Support Master Training, February 2018 and Water Safety Master Training, March 2018**
- **Protected Areas Network Fund (PAN-F); First-Aid and Basic Life Support Master Training, February 2018 and Water Safety Master Training, March 2018**
- **Office of the Vice President/Ministry of Justice; World Red Cross Day, May 2018 - present**
- **Rubekul Belau (Council of Chiefs); World Red Cross Day, May 2018 - present**
- **Ministry of Health, Emergency Health; World Red Cross Day, May 2018 - present**
- **Office of the Vice President/Ministry of Justice; World Blood Donor Day (WBDD), June 2018**
- **Ministry of Health, Bureaus of Public Health and Hospital & Clinical Services, WBDD, June 2018**
- **Governors' Association; Red Cross Disaster Action Team Train-the-Trainer, August 2018 and First-Aid and Disaster Management Community Trainings, August 2018 - present**
- **Healthcare Coalition; National Preparedness Month; September 2018 - present**
- **Ministry of Health, Palau Community College, Area Health Education Center, Joint Commission of Empress Shoken Fund, Family Caregiver Training, September 2018 - present**
- **International Federation of Red Cross and Red Crescent Societies (IFRC): Ongoing**
- **International Committee of Red Cross (ICRC): Ongoing**
- **American Red Cross: Family service to Palauans serving in the U.S. Armed Forces; ongoing**
- **Philippine Red Cross: First-Aid and Basic Life Support Master Training and Water Safety Master Training, Feb 2018 – present**



### 3. Strengthen good governance.

- Conduct regular PRCS General Assemblies.
- Governance members at all levels are inducted into their roles and responsibilities and provided opportunities for development and growth in their respective roles.

Palau Red Cross Society will conduct an Organizational Capacity Assessment and Certification (OCAC) process in October 2018, participated by a diverse group of its stakeholders.

A General membership meeting will be held in January 2019. This will enable PRCS to inform the members of PRCS' accomplishments and challenges in Fiscal Year 2018 (October 2017-September 2018) as well as notify them of the upcoming General Assembly and Elections in May 2019.

### 4. Improve transparency and accountability.

- *Conduct and publish annual financial audit.*

In June, PRCS Governance and Management engaged *Burger, Comer, and Magliari (BCM)*, CPAs to conduct the **external financial audit for Palau Red Cross for FY 2017**. The Audit Report gave an **UNMODIFIED opinion**, *"In our opinion, the financial statements referred to above present fairly, in all material aspects, the financial position of Palau Red Cross Society as of September 30, 2017, and the changes in its net assets and its cash flows for the year then ended in accordance with accounting principles generally accepted in the United States of America"*. A copy of the audit report is available on PRCS website, [www.palauredcross.org](http://www.palauredcross.org).

- *Regularly update social media and the website to inform community members and develop mechanisms to receive feedback.*

Towards the end of year 2017, PRCS created and began proper maintenance of its Facebook page, [www.facebook.com/palauredcross/](http://www.facebook.com/palauredcross/). The PRCS Facebook page is now up to 897 Likes and 909 Followers. A total of 55 posts were made from October 1, 2017 – September 30, 2018. The least Reach we have received through our Facebook posts is 22 people and the most is 2,100 people. Every post made is set to Public view therefore enabling anyone to like and comment as a mechanism to receive feedback. Several posts as well have a "Send Message" button for people to direct message the PRCS Facebook page. The Dissemination and Communication



Officer continues to do PRCS Facebook posts 3-5 times a week to continue to keep the public engaged and informed of the work of Red Cross.

PRCS Website, [www.palauredcross.org](http://www.palauredcross.org), went live in October 2017. The website is where general information about PRCS can be found; the formation of the organization, services offered and announcements.

- *Publish quarterly newsletters with news, updates, activities, donations, and members.*

Newsletters for the month of November 2017, December 2017 and January 2018 were published and disseminated. Newsletters for the subsequent months were suspended due to the creation and concentration on the PRCS Facebook account and the required number of weekly postings as well as the decrease in the number of employees under the Dissemination and Communication Office from two (2) to one (1) personnel. Newsletter publication and dissemination will resume in FY 2019.

Databases including basic demographic information for members, volunteers, and donors are being developed to enable mass emails, newsletters, and communication among the PRCS family as we continue to improve to make it a strong, relevant and sustainable humanitarian organization.

## **5. Ensure financial sustainability**

*Significantly increase current income sources and develop alternative revenue streams to cover PRCS annual service delivery plans and core costs.*

- *Leverage PRCS services to generate government funding support.*

PRCS has been actively working on re-engagement with the Palau National Government to increase funding support from USD10,000/year to the proposed USD50,000 per year *[continuing to advocate for further increase in the following years]*. PRCS packaged their FY 2018 Performance Report of accomplishments showing their significant activities out of the USD10,000 prior year support and submitted it during the annual government budget submission for its FY 2019 Budget. PRCS continues to build relations with public officials and now has good engagements and partnerships with the Ministry of Health, Ministry of Education, and Ministry of Justice.

- *Review and/or revise First Aid program to ensure it becomes a significant income stream of PRCS, increasing at least 10% annually.*

**PRCS Board Resolution #04\_Series 2018:** A Resolution approving Palau Red Cross Society Resource Mobilization Strategies was unanimously approved on 13 April 2018.

Mobilization Strategies:

- *Individual Donation Levels*
- *Corporate Donation Levels*
- *First-Aid & Basic Life Support Training Fees*

PRCS Governance deemed it necessary to diversify resource mobilization for the society to enable improvement of existing services as well as expand programs to serve more vulnerable populations and thus included individual and corporate donation levels.

- *Sign up in 2018 250-300 payroll allotters and increase 10% annually.*  
PRCS bi-weekly allotters has increased to 139 today from 41 allotters last September 2017. These are individuals who graciously agree to automatically deduct from their pay-checks \$2-\$7 dollars bi-weekly as their donation to support PRCS activities and program all year round. These allotment donors come from various national government, state government, and semi-government offices. PRCS gratefully acknowledges their year-round support.



- *Explore alternative revenue streams and reflect this in the Annual Plan and Budget of PRCS; e.g., corporate support.*

PRCS celebrated the World Red Cross day together with partners including Rubekul Belau, Office of the Vice President, Ministry of Justice, and Ministry of Health on May 11th. The celebration boosted the image of PRCS. At the same time, PRCS launched their first Open House and Red Cross Appeal receiving around USD 7,000 from the public. As PRCS becomes more and more visible and publicly relevant and appreciated, significant fundraisers will be undertaken by the National Society.



Utilizing the expertise at PRCS, our national society was able to offer contractual services and bring in much needed revenues with the following organizations:

- Center for Women's Empowerment Belau (C-WEB): Conference Event Coordinator for *Sharing Best Practices for Effective Leadership Conference* on March 1-2, 2018 and *Palau Women in Leadership Partnership Forum* on March 8, 2018; 10,000 CAD/ USD 7,300; Net Income-USD 2,000
- Fiji National University: Key Informant and Focus Group Interviews for *Case study on recent taxes in Palau: a snapshot of earmarking of revenues for the new NCD Fund to identify factors of success*; USD 3,000; Summer 2018
- RISEL BELAU: Logistical arrangement for Risel Belau weekly meetings; USD 1,500/annum
- PRCS Previously-owned retail: sale of used clothing and household items; USD 2,000/annum



- *Actively seek grants from domestic/international opportunities.*  
Local and external Grants have become a significant revenue stream for Palau Red Cross. Most recent are:

- **Empress Shoken Fund:** *Palau Caregiver Certificate Program* – USD 30,000
- **India-Palau 2018 Year of Good Health Small Grant:** *PRCS Youth Healthy Living Summer Convention with First Aid Certification* – USD 10,000
- **Matson Grant:** *To help Palau Red Cross Society (PRCS) and Belau National Hospital, Ministry of Health's goal in improving and expanding the blood bank / blood transfusion room with new equipment and supplies* - USD 5,000 cash and additional USD 5,000 in-kind shipping
- **UN Women's Peace and Humanitarian Fund:** *Women's Empowerment through Emergency Preparedness, Crisis Response and Recovery* – USD 300,000





- **Palau GEF Small Grants Program:** Improving community preparedness and response to disasters due to the impact of climate change in Palau; Developing and testing a community-based Early Warning System in Kayangel State – USD 20,000 (will be received in October)

## 1. Capacitate human resources

- *Promote, protect and recognize PRCS volunteers.*

Palau Red Cross has 298 volunteers: 119 males, 179 females. On May 3rd, 97 of the 298 volunteers participated in the National Emergency Committee (NEC) Mass Rescue Operations (MRO) Drill Exercise with the scenario of a passenger aircraft that crashed into the water near the coast of Meyuns, Koror. The MRO Drill Exercise was a success with a score of 10/10.

| VOLUNTEERS      | Male       | Female     | TOTAL      |
|-----------------|------------|------------|------------|
| Koror/HQ Zone   | 91         | 92         | 183        |
| East Zone       | 14         | 18         | 32         |
| West Zone       | 11         | 61         | 72         |
| Peleliu Zone    | 1          | 0          | 1          |
| Angaur, SW Zone | 2          | 8          | 10         |
| <b>TOTAL</b>    | <b>119</b> | <b>179</b> | <b>298</b> |



- *Organize PRCS School and Community Red Cross Youth Councils to serve as platforms for youths to be volunteers and leaders.*

PRCS applied for and was awarded the **India-Palau 2018 Year of Good Health Small Grant** in July. The project titled *PRCS Youth Healthy Living Summer Convention with First Aid Certification* was the stepping stone toward establishing the Palau Red Cross Youth Commission established on July 26, 2018. Elections were held, and the following youth members became the first Palau Red Cross Youth Council.

- *Abel Noah, Chairman*
- *JB Victorino, Vice Chairman*
- *Tarmau Ngiramengior, Treasurer*
- *Bianca Temol, Secretary*
- *Dylan Pasqual, Coordinator of First Aid*
- *Rukebai Kikuo, Coordinator of Disaster Management*
- *Beckwin Mechol Jr., Coordinator of Health and Social Services*
- *Dahlia Fabian, Coordinator of Pledge 25*



- *Enhance capacities of staff, members, volunteers, youth through trainings and facilitated learning opportunities.*

Local training and other capacity building opportunities for staff and youth volunteers:

- First Aid & CPR (ongoing)
- Pacific Emergency and Response Logistics Practical Training - Dec 2017
- First Aid and Basic Life Support Master Training - Feb-Mar 2018
- Water Safety Master Training - Mar 2018
- North Pacific Regional Conference on Voluntary Non-Remunerated Blood Donation - Mar 2018
- Summer Youth Convention including First Aid & CPR - Jul 2018
- Red Cross Disaster Action Team (R-DAT) "Train-the-Trainer" Training - Aug 2018
- Association of the Pacific Islands Public Auditors' (APIPA) Conference - Aug 2018



External training and other capacity building opportunities for staff and youth volunteers:

- |   |            |      |
|---|------------|------|
| - Pacific Finance Managers Forum  | Nov 2017   | Fiji |
| - Regional Organizational Capacity Assessment & Certification (OCAC) Facilitators' Training | April 2018 | Fiji |
| - Logistics Cluster Workshop  | April 2018 | RMI  |
| - Fundraising & Resource Mobilization Workshop  | Aug 2018   | FSM  |
| - North Pacific National Societies Communication Support & Training                         | Aug 2018   | FSM  |
| - Pacific Youth as Agents of Behavioural Change (YABC) Peer Educator Training               | Aug 2018   | Fiji |
| - Pacific Disaster Managers' Network Meeting & Disaster Management Forum                    | Sep 2018   | Fiji |
| - First Aid School Competition Study Tour   | Sep 2018   | FSM  |



## 2. Strengthen policies, systems and procedures

- Review current policies, systems and procedures and revise, update, or develop new ones as appropriate.
- Disseminate and implement policies, systems and procedures.
- Develop PRCS Rules of Procedures.

**PRCS Board Resolution #02\_Series 2017:** A Resolution approving the Palau Red Cross Finance Manual was unanimously approved on 13 December 2017.

**PRCS Board Resolution #01\_Series 2018:** A Resolution approving the Palau Red Cross Society 5-year Strategic Plan 2018-2022 was unanimously approved on 13 April 2018.

**PRCS Board Resolution #03\_Series 2018:** A Resolution approving the Palau Red Cross Society Fiscal Year Planning and Budgeting Process was unanimously approved on 13 April 2018.

The following policies have been finalized and are ready for board review and approval in the next National Governing Board meeting:

+Code of Conduct Youth

+Child Protection

+Youth

+Volunteering

The PRCS Rules of Procedures is set to be completed in January 2019 to be implemented during the General Assembly in May 2019.

## 3. Improve external communications and PRCS positioning

- Actively promote Red Cross knowledge, through pamphlets, fliers, videos, radio guesting, newspaper press releases, showcasing the services and programs offered by PRCS.
- Ensure that PRCS social media accounts are updated.
- Initiate or participate in national, international or global events or advocacies consistent with the Fundamental Principles (Palau RC + 1 org as conveners of 1 Billion Coalition for Resilience).

**Oct – Nov 2017:** PRCS celebrated its **20<sup>th</sup> Anniversary** with Presidential Proclamation No. 17-129 and a Plate Lunch Fundraiser and Garage Sale on Oct 27<sup>th</sup>. The Garage sales continued into Nov 3<sup>rd</sup>, Nov 10<sup>th</sup>, and Nov 17<sup>th</sup>. Starting in November, PRCS and Workforce Innovation and Opportunity Act (WIOA) Office jointly implemented the **Work Experience Skills Training Program** for two trainees in the areas of Administration and Maintenance.



**Dec 2017:** PRCS in partnership with Omekesang celebrated **International Day of Persons with Disabilities** and participated in the **Convention on the Rights of Persons with Disabilities Symposium** on Dec 3<sup>th</sup>. PRCS also launched its **Annual Christmas Program** with the Holiday Canned Food Drive with partners Ministry of Health Home Health Program, Office of the President, Surangel & Sons Company, and WCTC Shopping Center & Airai Mart. Total of twenty (20) homebound patients and all inpatients at Belau National Hospital were the beneficiaries of the Christmas Program.

| HOLIDAY PROGRAM<br>for HOME-BOUND PATIENTS |           |
|--|-----------|
| Ngarchelong                                | 3         |
| Ngaraard                                   | 3         |
| Ngaremlengui                               | 3         |
| Ngatpang                                   | 1         |
| Ngiwal                                     | 4         |
| Ngchesar                                   | 4         |
| Koror                                      | 2         |
| <b>TOTAL</b>                               | <b>20</b> |



**Jan 2018:** PRCS National Governing Board, Staff, Volunteers, and Partners came together in January 25-26 for the Strategic Planning Workshop. The **PRCS 5-year Strategic Plan** was unanimously approved by the National Governing Board on 13 April through PRCS Board Resolution #01\_Series 2018.



**Feb – Mar 2018:** PRCS in partnership with Philippine Red Cross, Ministry of Education, Ministry of Justice, Palau National Olympics Committee (PNOC), and Protected Areas Network Fund (PAN-F) hosted the **First-Aid and Basic Life Support Master Training** from Feb 26-Mar 7 and **Water Safety Master Training** from March 8-13. As a result of the trainings, PRCS now has **sixteen (16) First-Aid and Basic Life Support Master Trainers** and **eleven (11) Water Safety Master Trainers**.



**FA-BLS and Water Safety Master Trainers Graduation Ceremony**

Also, in March, PRCS in partnership with International Federation of Red Cross and Red Crescent Societies (IFRC) hosted the **First North Pacific Regional Conference on Voluntary Non-Remunerated Blood Donation** from March 26-28. Red Cross representatives from Micronesia Red Cross, Marshall Island Red Cross, Kiribati Red Cross, Solomon Islands Red Cross Australian Red Cross Blood Service, and Palau Red Cross including Palau





Ministry of Health, with technical assistance from IFRC, Australian Red Cross Blood Service, and Global Advisory Panel on Corporate Governance and Risk Management on Blood Services in Red Cross/Red Crescent.

**Apr 2018:** PRCS and Micronesia Red Cross represented the North Pacific Red Cross Societies in the **Regional Organizational Capacity Assessment and Certification (OCAC) Facilitators Training Workshop** on April 19-21 in Suva, Fiji. As Certified OCAC Facilitators, PRCS and MRCS staff can now co-facilitate OCAC workshops for other national societies in the Pacific.



Micronesia Red Cross Society  
OCAC Workshop, 14-16 May 2018



**May 2018:** PRCS celebrated the **World Red Cross** day together with partners including Rubekul Belau, Office of the Vice President, Ministry of Justice, and Ministry of Health on May 11<sup>th</sup> with an Open House and Appeal (Fundraiser) Day complete with Raffle Prizes and Giveaways. The celebration boosted the image of PRCS. In addition, PRCS was able to assist Micronesia Red Cross by sending the Executive Director to co-facilitate the Micronesia Red Cross OCAC Workshop that took place from May 14-16.

**Jun 2018:** PRCS in partnership with Office of the Vice President/Ministry of Justice (MOJ) and Ministry of Health (MOH), commemorated and awarded the Top Ten Blood Donors for 2017 during **World Blood Donor Day** celebration held on June 15<sup>th</sup>. In addition, with the help of MOH, a community Blood Drive was held at the PRCS office. Majority of Law Enforcement Officers pledged to become voluntary blood donors and several of them donated blood that day. Ministry of Health held a Health Promotion & Outreach that included free screening services. A special locally produced video on voluntary non-remunerated blood donation was developed and aired during the whole week.





**Jul 2018:** PRCS in partnership with Office of the President of ROP held an **Emergency Relief Fundraiser Drive for Japan** on July 13, 2018. A total of USD 50,000 was collected and transmitted to Japanese Red Cross Society to help the victims of the floods and landslides. In the same month, PRCS held its first **Summer Youth Convention** from July 23-26<sup>th</sup> with funding support from the India-Palau Small Grants. During the Convention, the PRCS Youth Commission was established and the first Youth Council members were elected.



**Aug 2018:** With funding support received from the International Federation of Red Cross and Red Crescent Societies (IFRC), PRCS hosted the **Red Cross Disaster Action Team (RDAT) Train-the-Trainer Training** from Aug 20-24, where two representatives from each State Government were invited to participate. A total of 8 were certified as Lead Facilitators, 11 as Co-Facilitators and 10 as Training Assistants.



**Sep 2018:** The Healthcare Coalition, of which PRCS is a member of, celebrated the **National Preparedness Month**, Sep 2018, with activities and outreach meetings to fifteen of the sixteen states of Palau. Ngaraard State was undergoing new leadership transition and as a result of the recently concluded election and therefore the outreach meeting was scheduled to take place in October. The activities kicked off with Presidential Proclamation No. 18-241 and included Preparedness Talk Show, Roadside Campaign, 9/11 Memorial, National Day of Action Float and closed with a Preparedness Fair. PRCS, as a member, actively participated in all activities. In addition, the **Women's Empowerment through Emergency Preparedness, Crisis Response and Recovery Project** funded by UN Women's Peace and Humanitarian Fund Project was launched on September 17<sup>th</sup> at the Belau National Museum. The launching ceremony was well attended by the UN Women's Office Representative Mr. Nicolas Burniat, Honorable Raynold B. Oilouch, Vice President of the ROP, Rubekul Belau (Council of Chiefs), all Project Partners, Community Representatives from the eight recipient states, UN Joint Presence Office, and many women community members. The second **RDAT Community Training** was held in Aimeliik State on Sep 13-14 where a total of 18 community members were trained in Disaster Management and First-Aid & CPR. Lastly, the first of the five (5) **Family Caregiver Trainings** supported by the Empress Shoken Fund





was held on Sep 17-21 for the Babeldaob eastern states (Ngiwal, Melekeok, and Ngchesar) at Bailechesau in Melekeok State. Participants included family members of the elderly, home-bound and disabled including interested community members. Participants were trained and certified in Caregiving skills and techniques as well as First-Aid and CPR.



Ongoing public relations / dissemination and communication activities for PRCS programs and services take place year-round including Social Media updates, Live Radio Talk Shows, Radio Announcements, PRCS advertisements / videos on local channels, Newspaper Advertisements and Articles, and posting of fliers around town.



#### 4. Develop Logistics

- *Repair existing warehouse storage facilities.*
- *Maintain effective inventory management.*

With assistance from United States Civic Action Team (CAT) 84-05, the PRCS container warehouses were repaired to ensure that they will continue to effectively house the Red Cross Non-Food Relief Items which are critical for supporting people affected by emergencies or disasters. PRCS has four (4) warehouse containers; three (3) are located at the Palau Community College campus and the 4<sup>th</sup> is located at Catholic Mission grounds. With support from IFRC, the containers store the following standardized relief items:



| Description                   | Quantity |
|-------------------------------|----------|
| Blankets (med)                | 500 each |
| Tarpaulins (4x6m)             | 290 each |
| Jerry Cans 10L                | 390 each |
| Shelter Tool Kits             | 50 each  |
| Kitchen Sets                  | 81 each  |
| Hand crank radios/solar lamps | 100 each |
| Bucket, 14L                   | 100 each |

- *Procure new PRCS vehicle and establish own National Headquarters.*

With funding support from *the Empress Shoken Fund*, PRCS procured a used van for daily operations. Plans are already in place to 'lay to rest' the beloved 20+year-old PRCS 4x4 pick-up truck that has been declared "unsafe" for use.

## Strategic Goal 2: Enhance Community Resilience

### 1. Improve community disaster preparedness, disaster response and disaster risk reduction.

- *Establish Red Cross Disaster Action Teams (RDAT) in every PRCS branch and provide appropriate skills; e.g., assessment, relief, shelter, reporting, First Aid.*
- *Implement low cost-low tech Community Based Disaster Preparedness and Risk Reduction programs.*

With funding support from International Federation of Red Cross and Red Crescent Societies (IFRC), former Director of Disaster management of Philippine Red Cross, Ms. Restylou Talamayan, had a one- month mission in Palau (August 1 to 31) supporting the Disaster Management Officer in developing the Disaster Management capacities of the National Society. Her mission included facilitating the *Red Cross Disaster Action Team (RDAT) Train-the-Trainer Training* from Aug 20-24 where two representatives from each State Government were invited to participate. A total of 8 were certified as Lead Facilitators, 11 as Co-Facilitators and 10 as Training Assistants. The RDAT Trainers are all certified First Aiders, First Aid being the basic component of their response mechanism.





In partnership with Governor Mary Frances Remengesau of Ngaremlengui State, the first *RDAT Community Training* was held in Ngaremlengui State on Aug 27-28 where a total of 16 community members were trained in Disaster Management and First-Aid & CPR.

| RDAT Location 2018 | Male      | Female   | TOTAL     |
|--------------------|-----------|----------|-----------|
| Ngaremlengui       | 16        | 0        | 16        |
| Aimeliik           | 14        | 4        | 18        |
| <b>TOTAL</b>       | <b>30</b> | <b>4</b> | <b>34</b> |



Ngaremlengui RDAT & FA-CPR Community Training

The next RDAT community training was held in Aimeliik State on Sep 13-14 in partnership with Governor Demei Obak. 18 community members of Aimeliik were trained and certified. Community Trainings will continue for the rest of the sixteen states in FY 2019.



Aimeliik RDAT & FA-CPR Community Training

- *Support the development and implementation of low-cost low-tech community based early warning early action initiatives.*
- *Develop and implement low cost and low-tech initiatives addressing climate change, mobilizing PRCS branches and volunteers.*

Phase II of the RDAT Community Program includes the community and PRCS working together implementing low-cost low-tech community based early warning systems (EWS). This entails designation of strategic sites in the community for the installation of early warning bells as well as a community-wide table-top and drill exercise to test the effectiveness of the early warning systems and the community response time. Phase II is planned to begin in January 2019 after the completion of the RDAT Community Training in the first eight (8) of the sixteen (16) states.



With support from the IFRC and the Italian Red Cross, an Early Warning System (EWS) project was implemented in Ngaraard in September 2017. Two bells were erected in 2 communities, Ngesang and Ulimang, to serve as early warning equipment of their respective communities.

- *Expand First Aid/CPR and Water Safety trainings to schools and local community groups in every state.*
- *Establish a database for all humanitarian-related agencies/services.*

The development for the database for all humanitarian-related agencies is set to begin in 2019. PRCS Master Trainers started implementing the expansion of First Aid and CPR trainings right after the conclusion of the First Aid and Basic Life Support Master Training in March.

| <b>COMMUNITY FIRST AID and CPR TRAINING</b> |             |                          |
|---|-------------|--------------------------|
| <b>CLASS</b>                                | <b>DATE</b> | <b>NUMBERS CERTIFIED</b> |
| Open Community Promotional Training         | Mar         | 19                       |
| Ministry of Education BUS DRIVERS           | Apr         | 11                       |
| World Red Cross Day Trainings               | May         | 45                       |
| Junior Statesmen of America (JSA) students  | Jun         | 7                        |
| EBIIL Society Camp Counselors               | Jul         | 11                       |
| PRCS Youth Commission                       | Jul         | 19                       |
| RDAT Trainers                               | Aug         | 27                       |
| Ngaremlengui RDAT Community                 | Aug         | 16                       |
| OMEKESANG and Palau Parents Empowered       | Sep         | 14                       |
| Aimeliik RDAT Community                     | Sep         | 18                       |
| MOE Teachers & KSG Rangers                  | Sep         | 25                       |
| Caregiver Training Participants – East      | Sep         | 15                       |
| <b>TOTAL</b>                                |             | <b>227</b>               |

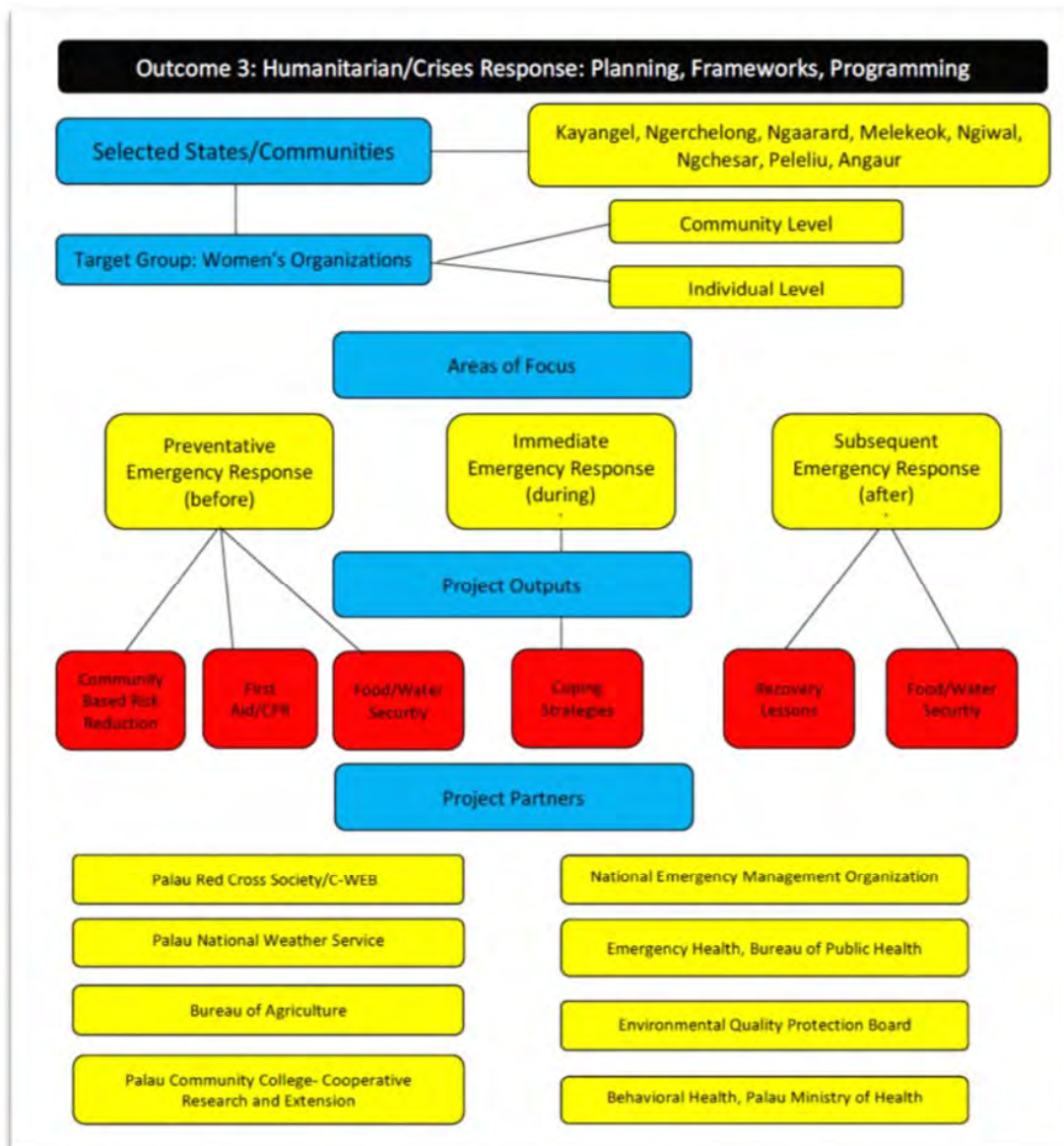
- *Conduct vulnerability and capacity assessments to ensure relevant, and gender-sensitive actions appropriately addressing vulnerabilities.*
- *Partner with relevant agencies to improve water and food security.*

Women's Empowerment through Emergency Preparedness, Crisis Response and Recovery Project funded by UN Women's Peace and Humanitarian Fund was launched on September 17<sup>th</sup> and will continue until February 2020. Below is the overview chart of the Project. The community women group partners include:



Kayangel - **Ngara Tet el Dui**  
 Ngaraard – **Ngaramerk & Ngara Yolt**  
 Melekeok – **Ngarachotellouch**  
 Peleliu – **Seinendang/Kaudias**

Ngarchelong - **Dilisor**  
 Ngiwal – **Ngaraboes/Simaliwal**  
 Ngchesar – **Ngaratelok**  
 Angaur – **Ngar er a Lukes**



## 2. Be the primary First Aid / CPR reference center in Palau

- *Host a First Aid/CPR/Water Safety Master Trainer Course to increase the number of available certified instructors.*
- *Develop Palauan First Aid Training curriculum and materials*
- *Have a First Aid certified individual in every hamlet of Palau by 2020.*
- *Organize regular First Aid competitions.*

PRCS now has **sixteen (16) First-Aid and Basic Life Support Master Trainers and eleven (11) Water Safety Master Trainers** in addition to the original three (3) Instructors.

The number of people trained in First Aid and CPR doubled in 2018 from 252 First Aiders in 2017 to **536 First Aiders in 2018**. PRCS thanks all instructors especially the original First Aid Instructors namely Melson Miko, Adora Nobuo, and Allins Nobuo who have helped PRCS throughout the years.

Number of people certified as First Aiders by PRCS from Oct. 1, 2017 until Sept. 30, 2018 compared to previous fiscal year.

| YEAR | Male          | Female | Total |
|------|---------------|--------|-------|
| 2017 | Not available |        | 252   |
| 2018 | 298           | 238    | 536   |

In partnership with the Ministry of Education, the first First-Aid School Competition among elementary schools is set to take place in March 2019 during the School Awareness Week.

## 3. Conduct community-based health activities

- *Capacitate volunteers in branches to conduct health promotion and health education activities to address relevant community issues such as NCDs, and disease outbreaks.*

Activities for this will take place in 2019 after the establishment of branches in the five zones in ROP.

## 4. Promote voluntary non-remunerated blood donation

- *Sign a Memorandum of Understanding with the Ministry of Health on voluntary non-remunerated blood donation.*
- *Contribute to having an adequate supply of safe blood by promoting a voluntary non-remunerated blood donation.*
- *Develop and implement Palau Red Cross Pledge 25 Youth Group.*

The PRCS and Ministry of Health Representatives jointly represented Palau in the Northern Pacific Workshop on Voluntary Non-Remunerated Blood donation held in Palau in March 2018. A joint PRCS - MOH commitment to move towards a full voluntary non-remunerated blood donation was further explored in terms of practical actions. The MOU between PRCS and MOH is set to be finalized in FY 2019 as it will include other important health issues in addition to voluntary non-remunerated blood donation.



To promote voluntary non-remunerated blood donation, PRCS in partnership with Office of the Vice President/Ministry of Justice and Ministry of Health, commemorated and awarded the Top Ten Blood Donors for 2017 during **World Blood Donor Day** celebration held on June 15<sup>th</sup> at Ernguul Park.

The Palau Red Cross Pledge 25 Youth Group was established during the Summer Youth Convention in July. The Pledge 25 Program is actively recruiting members and planning for future activities.



## FY 2018 BLOOD DRIVES

|                                 |          |
|---------------------------------|----------|
| Palau Royal Resort (PRR)        | Nov 2017 |
| Seventh Day Adventist           | Nov 2017 |
| Iglesia Ni Cristo               | Jan 2018 |
| Iglesia Ni Cristo               | Apr 2018 |
| Ministry of Justice & Community | Jun 2018 |

**667 Units of Blood Donated – FY 2018**

### 5. Promote social inclusion

- Implement social care initiatives such as Homecare Training Program (HTP) and expand Homebound Assistance Program (HAP).
- Develop and implement socially inclusive initiatives involving seniors for healthy aging as well as persons with disabilities

In partnership with Governor Henaro Polloi of Melekeok State, the first of the five (5) Family Caregiver Trainings supported by the Empress Shoken Fund was held on Sep 24 - 28 at Bailechesau in Melekeok. Participants included family members and/or caretakers of the elderly, homebound, disabled, and including interested community members.

They were trained and certified in Caregiving skills and techniques as well as Basic First-Aid Skills.

The FREE Caregiver Training will continue to cover all states of the Republic.



There was a total of five blood drives during the four quarters in the year. We sincerely thank the **blood donor groups** as well as all the **individual blood donors** who voluntarily donated blood when PRCS contacted them or posted emergency requests on Facebook.



### FREE CAREGIVER TRAINING

Palau Ministry of Health, Palau Community College, Palau Area Health Education Center, and Palau Red Cross Society in a joint partnership applied for and received the Empress Shoken Fund Grant. This grant will support the delivery of the Family Caregiver Training throughout Palau.

The Family Caregiver Training is aimed at training the family member/caretaker of the elderly or homebound patient in the household. **Training el mor ngkel loba chuodel malchub eng smecher el ngara blai.**

---

The Family Caregiver Training is **FREE** and **OPEN TO THE PUBLIC**. Registration information and training schedule are as follows:

**REGISTRATION:** Register at your State office (at least 3 days before the training)

| TRAINING SCHEDULE: |  | VENUE:                      |
|--------------------|--|-----------------------------|
| SEP 24-28          | Babeldaob (East): Melekeok, Ngiwal, Ngchesar             | Bailechesau, Melekeok       |
| OCT 8-12           | Babeldaob (North): Ngaraard, Ngarchelong, Ngardmau       | Bai ra Klebeang, Ngaraard   |
| OCT 29-NOV 2       | Babeldaob (West): Ngaremlengui, Aimeliik, Ngatpang       | Ngatpang State Summer House |
| NOV 9-11*          | Kayangel, Peleliu, Angaur *(Fri-pm, All day Sat, Sun-am) | PCC-CE Training Room        |
| NOV 26-30          | Koror, Airai, Sonsorol, Hatohebei                        | PCC-CE Training Room        |

| COURSE OUTLINE<br>6:00-10:00pm |  |
|--------------------------------|--|
| Monday night                   | Normal aging, general principles in caring for the aged<br>Common Medical Problem—Anemia, DM, HTN, UTI |
| Tuesday night                  | Pain and symptoms<br>Difficult behavior<br>Relieving caregiver and family stress                       |
| Wednesday night                | Gait, fall prevention and transfer<br>Activities of daily living/bedsores<br>Oral health               |
| Thursday night                 | First-Aid  |
| Friday night                   | Summary of Training<br>Awarding of Certificates  |

*\*\*For more information about the Training and/or the Venue, please call Palau Red Cross Society at 488-5780/5781.*

Other Social Care Services during the year included the following:

#### Single-Incident Emergencies:

There was a total of 3 single incident emergencies, all 3 were fires. PRCS responded by providing basic household and personal supplies: portable stove, butane gas, kitchen set, buckets, clothes, blankets, and groceries.

| STRUCTURE        |          | VICTIMS      |           |
|------------------|----------|--------------|-----------|
|                  | NO.      |              | NO.       |
| Household        | 1        | Male         | 18        |
| Workers Barracks | 2        | Female       | 7         |
| <b>Total</b>     | <b>3</b> | <b>Total</b> | <b>25</b> |

#### Service to US Armed Forces:

PRCS in partnership with American Red Cross, provide support to members of the US military in cases of personal emergency such as illness or death of family members. This year, 25 servicemen/women came home for family emergencies.

| MILITARY CASES |           | US ARMED FORCES - BRANCHES |           |
|----------------|-----------|----------------------------|-----------|
|                | NO.       |                            | NO.       |
| Male           | 15        | Air Force                  | 1         |
| Female         | 10        | Army                       | 17        |
| <b>Total</b>   | <b>25</b> | Marines                    | 4         |
|                |           | Navy                       | 3         |
|                |           | <b>Total</b>               | <b>25</b> |

## 2018 Challenges, 2019 Prospects

PRCS embarked on the journey of positive change and growth in 2018. PRCS indeed grew positively and the journey continues, not only for growth but expansion and enhancement of the services as well.

However, every journey has challenges and PRCS encountered quite a few. The first challenge was maintaining operations with only two (2) full-time staff and one volunteer. In response, PRCS Management, with approval from the board, executed 6 short-term contract hires to jump-start FY 2018 activities. That was a risk and it paid off a hundred-fold. There were many challenges along the way and by far, the biggest challenge for 2018 was showing/proving to the local communities and external partners that PRCS could be counted on, and we did it. PRCS is relevant to the communities it serves.

Prospects for FY 2019 include Branch Development in the 5 zones of ROP as well as the upcoming General Assembly and Election in May 2019. We're so excited!!!



## Palau Red Cross Society Profit & Loss

October 2017 through September 2018

|   | Expense    |                                      |            |   |            |
|---|------------|--------------------------------------|------------|---|------------|
| 4999 · Uncategorized Income               | 0.00       |                                      |            |   |            |
| 5000 · Contributed Support                |            |                                      |            |   |            |
| 5013 · Donations                          |            | 6100 · Payroll Expenses              | 109,260.02 | 6400 · Purchase of Property <\$1000       |            |
| a. Allotment                              | 4,390.50   | 6105 · Salaries and Wages            | 380.00     | 6410 · Machinery & Equipment              | 112.90     |
| c. Donations for Japan Relief             | 50,753.47  | 6107 · Compensation/Stipend          | -890.82    | 6450 · Bldg Renov. & Improvement          | 373.30     |
| d. Individual Donations                   | 12,444.29  | 6100 · Payroll Expenses - Other      | 108,749.20 | Total 6400 · Purchase of Property <\$1000 | 486.20     |
| 5013 · Donations - Other                  | 0.00       | Total 6100 · Payroll Expenses        |            |   |            |
| Total 5013 · Donations                    | 67,588.26  | 6120 · Fringe benefits               |            | 6999 · Prior Year Expenses                | 0.00       |
| 5016 · ROP Government Appropriation       |            | 6122 · SS-ER contributions           | 7,648.21   | Total Expense                             | 252,468.74 |
| 5016 · ROP Appropriation                  | 10,000.00  | 6124 · MSA-ER Contributions          | 2,731.50   |   |            |
| Total 5016 · ROP Government Appropriation | 10,000.00  | Total 6120 · Fringe benefits         | 10,379.71  | Net Income                                | -43,565.50 |
| 5018 · Corporate/business grants          |            | 6200 · Operations                    |            |   |            |
| a. Empress Shoken Fund                    | 29,970.00  | 6210 · General supplies              | 9,533.98   |   |            |
| Total 5018 · Corporate/business grants    | 29,970.00  | 6212 · Communications                | 5,117.46   |   |            |
| 5024 · Federal grants                     |            | 6214 · Postage & Stamps              | 464.65     |   |            |
| a. India-Palau Grant                      | 9,960.00   | 6216 · Food & beverage               | 15,072.05  |   |            |
| 5024 · Federal grants - Other             | 0.00       | 6218 · Electricity                   | 20.00      |   |            |
| Total 5024 · Federal grants               | 9,960.00   | 6222 · Vehicle repair & maint        | 488.30     |   |            |
| 5028 · Other red cross grants             |            | 6224 · Fuel and POL                  | 3,534.77   |   |            |
| a. International Federation of RC         | 45,831.31  | 6226 · Rentals                       | 6,362.50   |   |            |
| b. International Committee of RC          | 13,675.00  | 6232 · Disaster Relief               | 50,367.00  |   |            |
| Total 5028 · Other red cross grants       | 59,506.31  | 6234 · Facility repair & maint       | 4,329.96   |   |            |
| Total 5000 · Contributed Support          | 177,024.57 | 6236 · Professional services         | 7,581.04   |   |            |
| 5050 · Earned revenues                    |            | 6238 · Travel expense                | 9,235.10   |   |            |
| 5052 · Membership dues & fees             | 641.65     | 6240 · Equipment repair & maint      | 1,089.35   |   |            |
| 5054 · CPR/FA Training fees               | 10,587.00  | Total 6200 · Operations              | 113,196.16 |   |            |
| 5056 · Special events revenues            |            | 6300 · Other Types of Expenses       |            |   |            |
| a. Fundraising Anniversary                | 2,320.00   | 6310 · Advertising expenses          | 6,460.12   |   |            |
| b. Women's Activity-Risel Belau           | 1,500.00   | 6312 · Bank fees and charges         | 459.60     |   |            |
| c. UN Grant/WPHF Launching                | 4,300.00   | 6314 · Dues and fees                 | 1,537.79   |   |            |
| d. Water Safety Workshop                  | 2,350.00   | 6316 · Training                      | 4,801.90   |   |            |
| e. Women Leadership Training              | 8,583.36   | 6318 · BOD meeting expenses          | 212.56     |   |            |
| Total 5056 · Special events revenues      | 19,053.36  | 6319 · Statutory Contribution        | 1,000.00   |   |            |
| 5058 · Other Income                       | 1,583.95   | 6320 · Gifts & Donations             | 1,228.50   |   |            |
| 5062 · Interest Income                    | 12.71      | 6322 · Refunds & Reimbursements      | 3,935.10   |   |            |
| Total 5050 · Earned revenues              | 31,878.67  | 6323 · Miscellaneous Expense         | 21.90      |   |            |
| Total Income                              | 208,903.24 | Total 6300 · Other Types of Expenses | 19,657.47  |   |            |
| Gross Profit                              | 208,903.24 |                                      |            |   |            |

# Palau Red Cross Society

## Balance Sheet

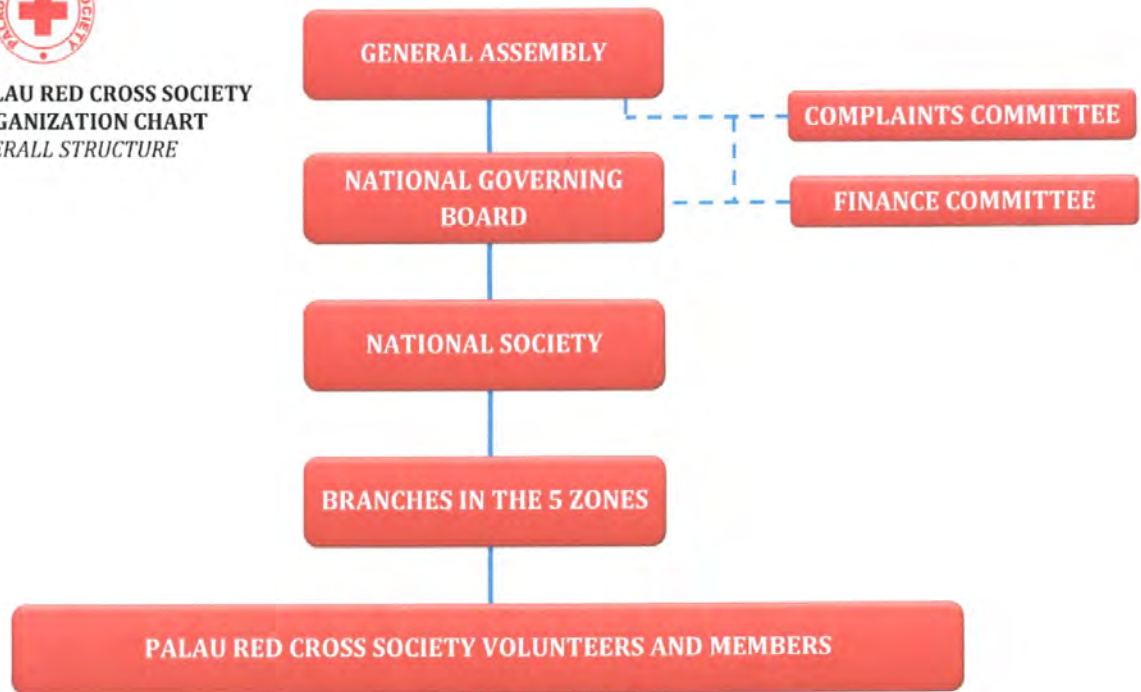
### As of September 30, 2018

|   |  |                   |
|---|--|-------------------|
| <b>ASSETS</b>                           |  |                   |
| <b>Current Assets</b>                   |  |                   |
| <b>Checking/Savings</b>                 |  |                   |
| 1000 • Cash in Bank                     |  | 3,329.69          |
| 1013 • Bank Pacific Checking (3855)     |  | 1,746.94          |
| 1015 • Bank of Guam- Checking           |  | 3,234.55          |
| 1018 • Bank Pacific Savings(60007478)   |  | 301.25            |
| 1020 • Petty Cash                       |  | 24.10             |
| 1021 • Petty Cash- BOPHA                |  | 1,524.09          |
| 1022 • Bank of Hawaii • Savings         |  | 92,061.18         |
| 1023 • Bank of Hawaii - Checking(5424)  |  | 3,093.20          |
| 1024 • Bank of Hawaii - C & D Account   |  | 105,315.00        |
| <b>Total 1000 • Cash in Bank</b>        |  | <b>19,415.87</b>  |
| <b>Total Checking/Savings</b>           |  | <b>19,415.87</b>  |
| <b>Accounts Receivable</b>              |  |                   |
| 1100 • Accounts Receivable              |  | 50.00             |
| <b>Total Accounts Receivable</b>        |  | <b>50.00</b>      |
| <b>Other Current Assets</b>             |  |                   |
| 1499 • *Undeposited Funds               |  | -59,024.20        |
| <b>Total Other Current Assets</b>       |  | <b>-59,024.20</b> |
| <b>Total Current Assets</b>             |  | <b>46,340.80</b>  |
| <b>Fixed Assets</b>                     |  |                   |
| <b>1700 • Fixed Assets</b>              |  |                   |
| 1721 • Computers and Printers           |  | 2,579.40          |
| 1722 • Machinery & Equipment            |  | 3,293.65          |
| 1723 • Vehicles                         |  | 8,155.00          |
| <b>Total 1700 • Fixed Assets</b>        |  | <b>14,028.05</b>  |
| <b>Total Fixed Assets</b>               |  | <b>14,028.05</b>  |
| <b>TOTAL ASSETS</b>                     |  | <b>60,368.85</b>  |
| <b>LIABILITIES &amp; EQUITY</b>         |  |                   |
| <b>Liabilities</b>                      |  |                   |
| <b>Current Liabilities</b>              |  |                   |
| <b>Accounts Payable</b>                 |  |                   |
| 2000 • Accounts Payable                 |  | 19,415.87         |
| <b>Total Accounts Payable</b>           |  | <b>19,415.87</b>  |
| <b>Other Current Liabilities</b>        |  |                   |
| <b>2100 • Payroll Liabilities</b>       |  |                   |
| 2101 • Income Tax- Payable              |  | -16.84            |
| 2102 • SS Contribution Payable          |  | 3,516.77          |
| 2103 • HCF- Contribution Payable        |  | 1,224.94          |
| 2100 • Payroll Liabilities - Other      |  | 1,802.96          |
| <b>Total 2100 • Payroll Liabilities</b> |  | <b>6,527.83</b>   |
| <b>Total Other Current Liabilities</b>  |  | <b>6,527.83</b>   |
| <b>Total Current Liabilities</b>        |  | <b>25,943.70</b>  |
| <b>Total Liabilities</b>                |  | <b>25,943.70</b>  |
| <b>Equity</b>                           |  |                   |
| <b>3000 • Opening Bal Equity</b>        |  | <b>34,034.61</b>  |
| <b>3900 • Retained Earnings</b>         |  | <b>43,956.04</b>  |
| <b>Net Income</b>                       |  | <b>-43,565.50</b> |
| <b>Total Equity</b>                     |  | <b>34,425.15</b>  |
| <b>TOTAL LIABILITIES &amp; EQUITY</b>   |  | <b>60,368.85</b>  |





**PALAU RED CROSS SOCIETY  
ORGANIZATION CHART  
OVERALL STRUCTURE**



**National Governing Board**

Santy Asanuma, Chairman  
 Ongerung Kambes Kesolei, Vice Chairman  
 Mary Ann Delemel, Treasurer  
 Emery Wenty, Member  
 Richard Ngiraked, Member  
 Margie Bechab, Member  
 Jacqueline Niro, Member  
 Moses Yobech, Member  
 Delegate Dilmai Saiske, Member

**Youth Council**

Abel Noah, Chairman  
 JB Victorino, Vice Chairman  
 Tarmau Ngiramengior, Treasurer  
 Bianca Temol, Secretary  
 Rukebai Kikuo, Disaster Management Coord.  
 Dahlia Fabian, Pledge 25 Coordinator  
 Dylan Pasqual, First Aid Coordinator  
 Beckwin Mechol Jr., Health and Social Care Coord.

**Personnel**

J. Maireng Sengebau, Executive Director  
 Martha Techitong, Office Manager  
 Wayne Wong, Disaster Management Officer  
 Michelle Ueda, Dissemination & Comm. Officer  
 Rona Pablico, Accounting Officer  
 Deavina Ken, WIOA Trainee  
 Samantha Iyar, Youth Volunteer  
 Sherwin Temengil Ingais, Youth Volunteer  
 Anthea Sengebau, Youth Volunteer  
*Catherine Littlefield, Disaster Mgmt. Officer, 10/17-05/18*  
*Deirdre Swej, WIOA Trainee, 11/17-05/18*  
*Hilary Matmag, Volunteer, 10/17-09/18*  
*Kelsey Bohman, Development Officer, 10/17-05/18*  
*Lisa L. Van Tassel, Programs Coordinator, 10/17-08/18*  
*Rand Alexander, WIOA Trainee, 11/17-08/18*

P.O. Box 6043 Koror, Republic of Palau 96940  
Tel | +(680) 488-5780/5781 Fax | +(680) 488-4540 Mobile | +(680) 775-PRCS (7727)  
Email | [info@palauredcross.org](mailto:info@palauredcross.org) Website | [www.palauredcross.org](http://www.palauredcross.org) Facebook | [www.facebook.com/palauredcross/](http://www.facebook.com/palauredcross/)

*A Palau Red Cross a "Bedud er a Dmolech" el mo er a rokui el chad el kiei er Belau.*